

U.S. Route 14 at Hartland / Hughes Road Phase I Study



We need your input!

Participate in our virtual public outreach anytime between May 17th and June 13th. Read more, look at exhibits, and provide comments at US14HartlandHughes.com



Illinois Department of Transportation
Division of Highways - District 1
201 W. Center Court
Schaumburg, IL 60196

U.S. Route 14 at Hartland / Hughes Road Phase I Study



The Illinois Department of Transportation (Department) is studying improvements to the intersection of U.S. Route 14 (U.S. 14) and Hartland / Hughes Road in order to improve safety. This study is being performed in accordance with the National Environmental Policy Act, which requires the examination of potential impacts to the natural and human environment when considering transportation improvements. U.S. 14 is a major arterial highway that connects McHenry County to Cook County, Lake County, and the larger Chicagoland area. This intersection is located between the Village of Harvard and the City of Woodstock.

Annually, the Department performs an analysis of statewide crash data to identify locations with the most pressing safety needs. The intersection of U.S. 14 with Hartland / Hughes Road was identified as one of these locations in the past years.

Safety is impacted by a combination of high speeds, traffic control, and intersection geometry. Short term countermeasures were implemented in Summer 2018, including moving the stop bar, adding additional pavement markings, and adding flashing beacons to alert drivers of the approaching intersection. Since then, six additional crashes have occurred in a one-year period. This Phase I study is pursuing long-term safety countermeasures at the intersection.

We need your input!

The Department is encouraging the public to learn more about the Phase I study of the intersection of U.S. 14 and Hartland / Hughes Road and provide feedback on potential intersection improvements. The Department is particularly interested in comments regarding the existing conditions of the intersection and your experience using the intersection.

Held virtually to protect the health and safety of the public, the virtual public outreach event will include a presentation, exhibits, and the opportunity to provide feedback. All are welcome to participate! Visit the project website US14HartlandHughes.com to view the materials and provide your comments. **Please note all comments received by June 13, 2021 will become part of the virtual outreach event record.**

U.S. Route 14 at Hartland / Hughes Road Phase I Study

Project Phases - Idea to Reality

The Illinois Department of Transportation processes projects in three distinct phases. Phase I includes preliminary engineering and environmental studies. During this phase, issues and concerns are identified, solutions are proposed, and the public is engaged. **Phase I** for this project is anticipated to take 24 months.

Phase II includes contract plan preparation and land acquisition, and typically takes 18 to 24 months to complete. **Phase III**, which is the most visible to the public, is the construction phase and may take 12 to 24 months to complete.



*Funded in FY 2021-2026 Proposed Highway Improvement Program.

The Phase I Study Process



Virtual Public Outreach

A video presentation, exhibits, and additional information about this project is available for viewing on our website. The website will be updated as the study progresses.

Participants with limited internet access may obtain additional copies of this newsletter and submit their comments via comment forms available at the location below, beginning May 17, 2021. Hard copies of other materials will be available upon request through the website.

McHenry County Division of Transportation
16111 Nelson Road
Woodstock, IL 60098

Ways to Comment

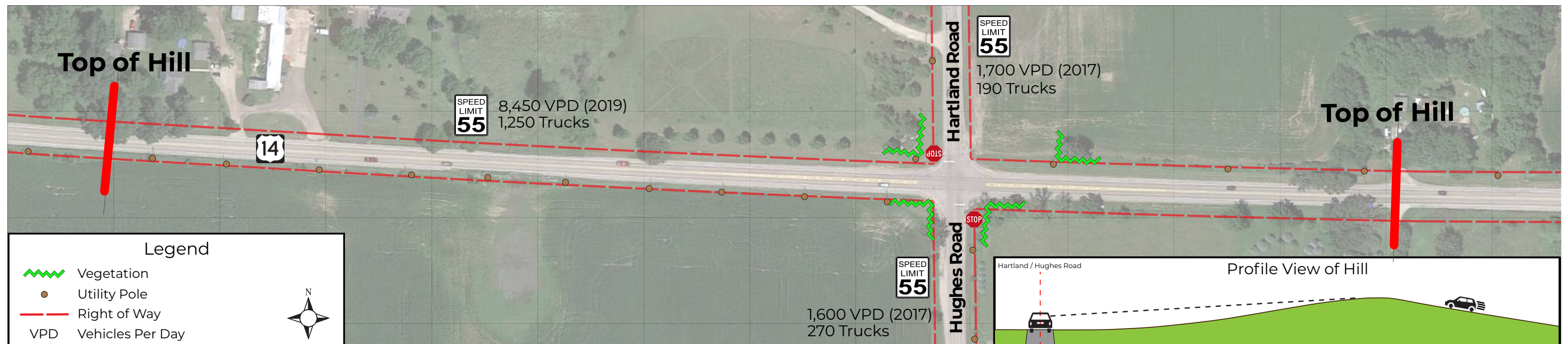
Call
(847) 705-4569

Email
US14HartlandHughes@gmail.com

Website
US14HartlandHughes.com

By Mail
Illinois Dept. of Transportation
Bureau of Programming
Attn: Anna Kutryn
201 Center Court
Schaumburg, IL 60196

The outreach efforts are accessible to people with disabilities. Anyone needing special assistance, including Spanish interpretation, should contact the project manager at (847) 705-4569 for more information. Persons who will need a sign language interpreter or other similar accommodations should notify the Department's TTY/TTD (866) 273-3681. It may take at least five days to provide accommodations.



U.S. Route 14 at Hartland / Hughes Road Phase I Study

Existing Conditions Exhibit - Not to Scale